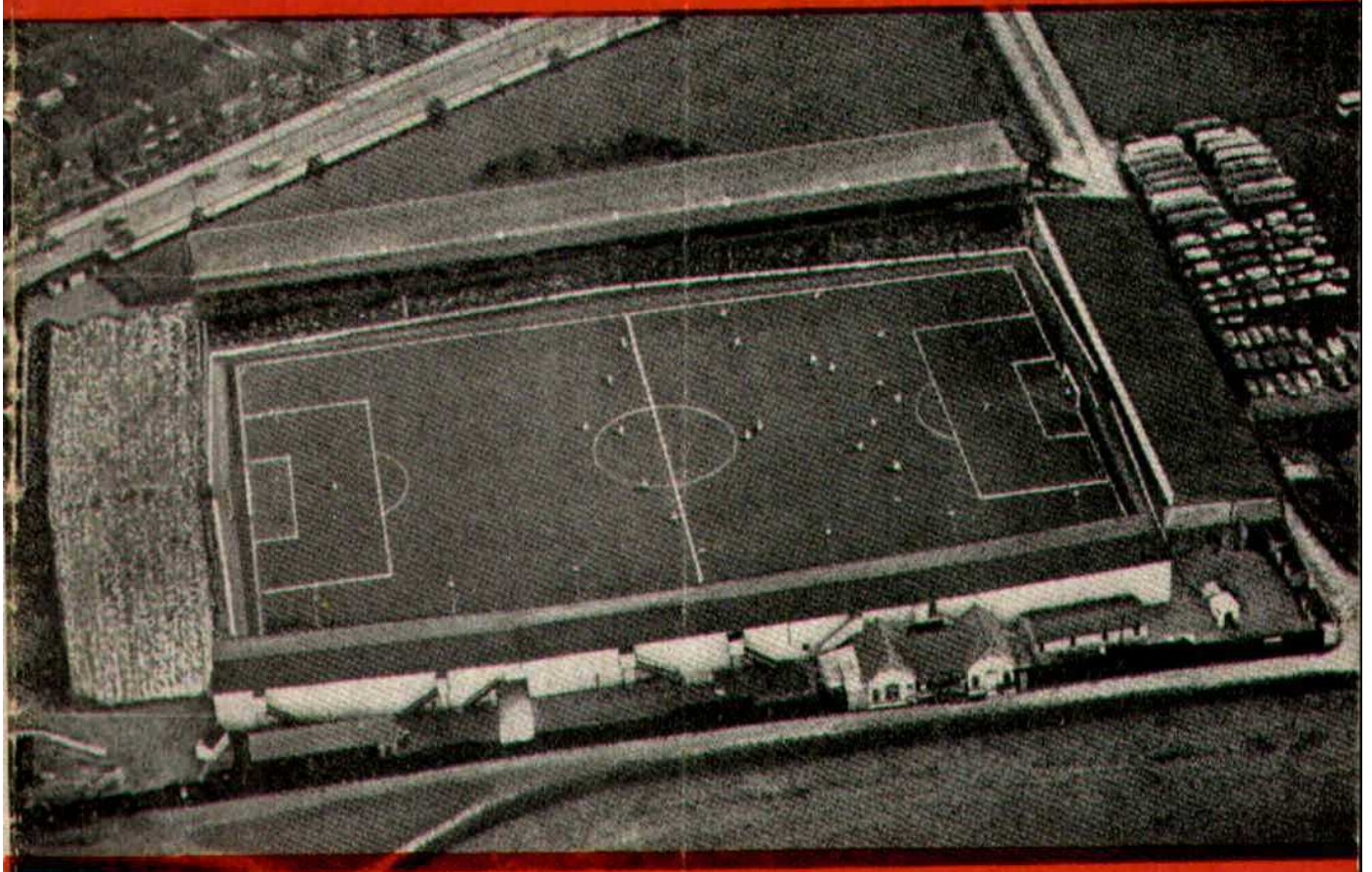




SWINDON TOWN FOOTBALL CLUB



WEDNESDAY, APRIL 12th, 1961

DIVISION III

SWINDON TN. v. HULL CITY

Kick-off 7.30 p.m.

Official Programme **4d.**

**SOUTHERN LAUNDRY
CO. LTD.**

Launderers and Dry Cleaners



TELEPHONE 4146
STATION RD., SWINDON

GO MODERN — GO ELECTRIC
for

TELEVISION, RADIO AND
DOMESTIC APPLIANCES

D. ROBSON

22 HAVELOCK STREET
6602 Swindon 6602

Make your Goal the

EAGLE HOTEL

(Prop.: Tom Hamilton)

WORTHINGTON :: GUINNESS
DEVENISH BEERS :: BASS
REGENT ST., SWINDON

LITTLE & CO. LTD.

The Name Linked with Service
and Value

*The Popular Ladies' and Men's
Complete Outfitters*



31-32 FLEET ST., SWINDON
Telephone 2831

NEXT MATCH . . .

FOOTBALL COMBINATION

SWINDON T. v. NOTTS C.

TOMORROW (THURSDAY), APRIL 13th, 1961

Kick-off 7.30 p.m.

Visit —

**THE
GRANADA CAFE**

60 CRICKLADE ROAD, SWINDON

Where good food
is served at a
reasonable price

LEESE, ING & Co. Ltd.

Incorporating BARKER & CO.

*Mineral Water and
Squash Manufacturers*



LANSDOWN RD., SWINDON
TELEPHONE 2744/2320

STADIUM SEATS

SEND FOR OUR ILLUSTRATED BROCHURE

We can manufacture to suit your requirements

**MARTYN LYNshaw LIMITED, BOUNDARY WORKS,
STRATTON ROAD, SWINDON**

SWINDON TOWN FOOTBALL COMPANY LIMITED

Registered Office: COUNTY GROUND, SWINDON.



President: H. V. SLADE, Esq., O.B.E., J.P.

Directors:

Mr. W. J. CASTLE (Chairman), Mr. H. E. LANE (Vice-Chairman).
Mr. B. T. HAMILTON (Hon. Treasurer), Messrs. C. CHANDLER, J. DAVIES,
R. FRICKER, C. J. GREEN, F. PLYER, H. WILLIAMS and K. H. WILMER.
Manager: B. J. HEAD. Secretary: R. A. MORSE.

VOL. 11

WEDNESDAY, APRIL 12th, 1961

No. 24

Club Notes

SWINDON 3, GRIMSBY 0.

Another step-up in the league table, and what a tonic for everyone! In the programme we mentioned the fact that our young lads were playing under great strain and tension. That was, of course, very obvious during the first fifteen minutes of last Saturday's game. Our boys were very nervous, and worried about making mistakes. We can assure spectators that the team feels the present position very acutely. Gradually, the team gained con-

fidence, and we got right on top, and a most entertaining game resulted, especially from our point of view. We also asked our supporters to be tolerant, but also to give every encouragement. Thank you, ladies and gentlemen; your support helped tremendously in the last two games.

We wonder how many of our supporters have noticed how well Swindon has played against clubs at the top of Division 3:—

Swindon 4, Bury 0.

Swindon 1, Q.P.R. 0.

Swindon 1, Walsall 0.

Swindon 3, Grimsby 0.

Swindon 6, Port Vale 0.

BE A GOOD SPORT
SHOP AT
Ron's Pet Stores
RODBOURNE ROAD and
CRICKLADE ROAD

Poultry Foods - Fresh Dog Meat

**WATSON'S
CENTRAL NEWSAGENCY**
LTD.
Swindon's Leading Wholesaler
1 WELLINGTON STREET, SWINDON
Tel. 2049

M. J. REYNOLDS
GROCER

152/154 CRICKLADE ROAD
5479 SWINDON 5479
COOKED HAM OUR SPECIALITY

L. WOLLEN
WINES & SPIRITS

373 Cricklade Rd., Swindon

CLUB NOTES—continued

Thus we have scored fifteen goals against the top five clubs with none against. On that record we should be league leaders. Evidently "the better the team, the better we play".

However, let us not be complacent; points are still urgently needed, in fact, every goal scored for or against could be

vital. May the good work continue this evening. Hull City will be dour and determined opponents, so please remember what we said at the beginning of these notes. Greet the lads, encourage and help them, and above all, be tolerant. We thought the game against Q.P.R. was our finest hour—surely last Saturday was even better. May we go even further tonight. On, Swindon, on, to success and more success.

FOR ALL YOUR ANGLING NEEDS
CONSULT

FRANK WOODWARD
Swindon's Fishing Tackle Specialist
25 HAVELOCK ST., SWINDON
PHONE 3879

H. E. LANE
(REGENT STREET) LTD.
The Pork Sausage Specialists
117 Victoria Rd., Swindon
Telephone: 2336

ARE YOU GOOD ENOUGH
to join the

**DUKE of EDINBURGH'S
ROYAL REGIMENT?**

A fine career awaits you at
ARMY INFORMATION OFFICE,
18 Faringdon Road, Swindon

FIXTURES AND RESULTS TO DATE

DIVISION III

1960			
Aug. 20	Halifax Tn.	H	1-1
22	Tranmere R.	A	2-2
27	Shrewsbury	A	1-1
31	Tranmere R.	H	1-0
Sept. 3	Walsall	H	1-0
6	Bristol C.	A	1-1
10	Bury	A	0-3
17	Chesterfield	H	2-0
20	Watford	A	0-1
24	Southend U.	A	2-0
28	Watford	H	1-2
Oct. 1	Port Vale	H	6-0
5	Torquay U.	A	1-1
8	Notts C.	A	0-1
12	Shrewsbury (Cup) ..	H	1-1
15	Bournemouth	H	0-1
19	Bristol C.	H	3-1
22	Bradford C.	A	1-2
29	Barnsley	H	P
Nov. 5	Bath City (Cup) ...	H	2-2
10	Bath City (Cup) ...	A	6-4
12	Colchester U.	H	0-2
19	Grimsby T.	A	0-0 A
26	Shrewsbury (Cup) ..	H	0-1
Dec. 3	Reading	A	1-1
10	Coventry C.	H	1-2
17	Halifax T.	A	1-1
24	Brentford	A	1-2
31	Shrewsbury	H	2-2
1961			
Jan. 7	(3) Brentford	H	1-1
14	Walsall	A	0-3 A
21	Bury	H	4-0
28	(4) Newport C.	A	0-2
Feb. 4	Chesterfield	A	1-1
11	Southend U.	H	1-1
18	(5) Port Vale	A	1-4
25	Reading	H	1-1
Mar. 4	(6) Bournem'th	A	1-2
11	Bradford C.	H	4-0
18	(S.F.) Barnsley	A	1-2
21	Walsall	A	1-2
25	Newport C.	H	2-0
31	Q.P.R.	A	1-3
Apr. 1	Colchester U.	A	1-3
3	Q.P.R.	H	1-0
8	Grimsby T.	H	3-0
12	Hull City	H	
15	Hull C.	A	
19	Barnsley	H	
22	Notts C.	H	
26	Torquay U.	H	
29	Coventry C.	A	
May 6	(Final)		

FOOTBALL COMBINATION

1960			
24	Aldershot	A	2-4
27	Shrewsbury T.	H	3-0
Sept. 3	Millwall	A	3-4
7	Fulham	A	1-1
10	Southend U.	H	1-2
13	Brentford	A	0-2
24	Brentford	H	0-1
27	Northampton	A	0-0
Oct. 1			
8	Mansfield T.	H	4-2
15	Reading	A	0-1
22	Swansea T.	H	1-1
29	Plymouth A.	A	0-0
Nov. 5	Crystal P.	H	P
12	Colchester U.	A	1-2
19	Notts C.	H	P
26	Coventry C.	A	P
Dec. 3	Luton Tn.	H	P
10	Mansfield T.	A	1-2
17	Northampton	H	1-3
24	Bristol R.	H	1-1
26	Bristol R.	A	0-6
31	Shrewsbury T.	A	1-3
1961			
Jan. 7	Peterborough U.	A	1-3
14	Millwall	H	3-3
21	Southend U.	A	1-3
28	Peterborough U. ...	H	0-2 A
Feb. 4	Fulham	H	0-5
18	Aldershot	H	0-0
25	Swansea Tn.	A	0-4
Mar. 4	Plymouth A.	H	2-0
11	Crystal P.	A	0-1
18	Colchester U.	H	1-0
22	Coventry C.	A	2-0
25	Notts C.	A	0-1
31	Q.P.R.	H	2-0
Apr. 1	Coventry C.	H	0-2
3	Q.P.R.	A	2-2
8	Luton T.	A	1-3
13	Notts C.	H	
15	Reading	H	
20	Luton T.	H	
22			
29	Peterborough U.	H	
May 1	Crystal P.	H	

Our Visitors

HULL CITY F.C.

We extend a warm welcome to the Directors, Officials and Players of Hull City F.C., who are our visitors this evening. Relegated from the Second Division last season, Hull is having a very mixed year. At present the team is midway in the League table.

When the two teams last met at Swindon, during 1958-59 season, we won 2-0. Our goalscorers were Edwards and Micklewright.

PEN PICTURES OF THE PLAYERS

FISHER, BERNARD (Goalkeeper)

5ft. 11in. 13st. 3lb. A young player, signed after completing his National Service. Made his debut in the Senior side against the Hungarian Club "VASAS" and gave an impressive display. He was one of the few players called up for service during the "Suez crisis". A very capable young player.

FEASEY, PAUL (Centre Half)

5ft. 9in. 11st. 12lb. Another local player who has graduated through the Junior sides. Joined the Club as an amateur in 1949 and became a part-time professional in 1950. Signed full-time on completing his National Service. A very strong and capable player, fast and clever with both feet and head.

GARVEY, BRIAN (Full-Back)

5ft. 9in. 11st. 9lb. A young local player, he joined the club as an amateur in 1953 and became a part-time professional in season 1957-58, having graduated through the Junior sides. A most popular young player, strong both in attack and defence, he has a bright future.

COLLINSON, LESLIE (Inside Forward)

5ft. 11½in. 11st. 13lb. A young local player who has graduated through the Junior sides. Quickly gained a position in the Senior side after completing his National Service. Made his debut in the F.A. Cup-tie v. Gateshead two years back, and gave an impressive display. A most promising young player.

CLARKE, DOUGLAS (Wing forward)

5ft. 9in. 12st. Joined City from Bury in 1955 and immediately became a firm favourite with the "fans". A strong player, he is a clever schemer and packs a strong shot. Joined Bury from Darwen in 1950. Another ever-present last season.

C. Dunn & Son

BUILDERS & DECORATORS

Alterations, Renovations, Conversions
Plumbers and Sanitary Engineers

503 CRICKLADE ROAD Tel. 2522

NOTTON'S CAFE

COUNTY ROAD

200 yards from Ground

RIGHT ON THE BALL

County Ground Hotel

(Adjoining Football Ground)

FULLY LICENSED

ARKELL'S ALES at THEIR BEST

Mine Host—Mr. Geo. Baillie

AT THE COUNTY GROUND TODAY—

WISES CATERING SERVICE

SWINDON'S LEADING OUTSIDE CATERERS
and for all your Special Events

55 GODDARD AVE. Phone 5562

OUR VISITORS—Continued

DAVIDSON, ANDREW (Full-Back)

5ft. 10½in. 12st. 10lb. A Scot, he joined City in 1948 and has graduated through the Junior sides. He is a most useful player in whichever position he plays, but he prefers left half-back. Very strong, he is a fearless player, strong in both attack and defence. Fought his way back to fitness after twice breaking his leg. An ever-present last season.

BULLESS, Brian (Wing half-back)

5ft. 10in. 11st. 9lb. Another Hull-born player, he joined the club in 1948 as an amateur and has graduated through the Junior sides. Signed professional in 1950-51. A fine ball-player, he is very fast and strong, and possesses a strong shot with either foot. Was originally a wing forward, but developed into a most capable inside forward and later, in an emergency, showed his capabilities when taking over the wing-half position. Scored 11 goals last season. Many clubs have sought the services of this young player.

GODDARD & Co.

Wholesale and Retail

WINE, SPIRIT, BEER
AND CIDER MERCHANTS



9 REGENT STREET, SWINDON
Telephone 2415



Also at
4 WINGATE PARADE, SWINDON

We are your MAIN DEALER for
VAUXHALL and JAGUAR cars
BEDFORD Vans and Trucks
Etc.

Any make of Car or Truck
supplied - Used Vehicles a
specialised part of our
business.



SKURRAY'S

SWINDON

Telephone: 2266

STRANGE'S GARAGE

Austin Dealers in Cars and Light Vans
Agents for Vespa Scooters
Second-hand Cars Bought and Sold

WOOTTON BASSETT

Telephone 216

Swindon Bacon Curing Co. Ltd.

*Specialists in
Bacon, Pork & Cooked Ham*

**50 FLEET STREET
SWINDON**

Telephone: 2122

WARNES (Swindon) Ltd.

ELECTRICAL CONTRACTORS
RADIO AND TELEVISION

Contractors to:
SWINDON TOWN FOOTBALL CLUB

51/52 COMMERCIAL RD., SWINDON
Phone 6486/6694

160 COUNTY RD., SWINDON
Phone 6346/7

9 SWINDON ST., HIGHWORTH
Phone 379

HALF-DAY EXCURSION BOOKINGS

Every Wednesday
to

LONDON
12/3

from SWINDON JUNCTION
Depart 2.32 p.m. and 4.5 p.m.
(Refreshment Car Trains)

Return from Paddington 6.35, 8.5,
8.55, 9.25, 10.30, 11.50 p.m. the
same day, or 1.0 (night).

BRITISH RAILWAYS

Western Region

MILLS & MER

H
O
U
S
E
F
U
R
N
I
S
H
E
R
S

SWINDON TOWN v. HULL CITY
SWINDON

RIGHT WING

Colours: RED SHIRTS

Burton

Jones, K. (2)

Morgan (4)

Owen

Corbett (7) Hunt (8) Summerbee (9)

Referee:

Mr. A. J. Robottom
(Walsall)



Crickmore (11) Price (10) Chilton

Bulless (6)

Feasey (7)

Garvey (3)

Fisher

HULL CITY

LEFT WING

These teams are subject to change

16-17 BRIDGE ST.

W. B. CARTER

Newsagent, Tobacconist and Confectioner

Large selection of Boxes of Chocolates
always in stock

CORONA, TIZER, DRINKS, Etc.

Agents for Wall's Ice Cream

188/190 FERNDALE RD., SWINDON

Telephone: 3089

Blunsdon Abbey Caravans Ltd.

N.C.C. Approved Trader

TRY CONSULTING US

FOR

SALE, SITES & SERVICE

A Home of your own in a few years
and no Landlord

Tel. Blunsdon 281

For Our Information Service

"Keep that Team spirit"
**JOINT TERRITORIAL
 THE ARMY**

Units in WILTSHIRE
 still need recruits

Apply for details by letter or by
 phone or in person at your local
 Drill Hall

**THE PLESSEY COMPANY
 Ltd.**

After years of achievement have great
 expansion plans for the future.

**TECHNICAL STAFF
 CLERICAL STAFF
 MANUAL WORKERS**

are essential for this progress.

Interested persons please apply to the
 Personnel Department.

ERRICKS LTD.

U P H O L S T E R E R S • R E M O V A L S

CITY Kick-off 7.30 p.m.
INDON TOWN
 D SHIRTS, WHITE SHORTS LEFT WING
 Burton
 Trollope (3)
 Owen (5) Bell (6)
 erbee (9) Woodruff (10) Jones, F. (11)
 Linesmen:
 Red Flag—
 Mr. J. R. Loynton
 (Solihull)
 Yellow Flag—
 Mr. N. A. S. Matthews
 (Bicester)
 Chilton (9) Collinson (8) Clarke (7)
 easey (5) McMillan (4)
 Davidson (2)
 Fisher
ULL CITY
 are subject to alteration RIGHT WING



ST. SWINDON PHONE 5365

INSIST ON
Garrard
 EQUIPMENT



For Superb Tape and Record Playing



Fitted by the World's leading
 manufacturers.

Haskins Garage

Sales: **WROUGHTON**: Service
 263

AUSTIN MORRIS
 LAND ROVER ROVER

**SWINDON'S NEW SNACK
 AND GRILL BAR**

HARLEQUIN

90 VICTORIA ROAD, SWINDON
 Open Daily 8.30 a.m. - 9.0 p.m.
 The Best Draw Home or Away!

"DO IT YOURSELF"
**BAYNES (SWINDON)
 TIMBER Co. Ltd.**

County Works, County Road, Swindon
 Tel. 4112/3

"THE PERFECT CENTRE"
 for all "do-it-yourself" enthusiasts.
 Call, write, phone your requirements:
 Hardwoods, softwoods, moulding, ply-
 wood, Formica and Perstorp, etc., all
 cut to your given sizes.

"IF WE HAVEN'T GOT IT — WE'LL GET IT!"
 Comprehensive catalogue sent on request
 One minute from the Ground

ONE QUALITY ONLY -- THE BEST!

FRESH SUPPLIES DAILY

York Road Fisheries

SWINDON

WET, DRY or FRIED Tel.: 3680

DEMPSTER ENTERPRISES, offer a modern fleet of 4 and 6 seater self-drive hire cars, for your pleasure and convenience. For advance bookings apply:-

Dempster Enterprises

4 MILTON ROAD, SWINDON

Tel. 6603

Rent your T.V. - Washing Machines
Spin Dryers - Electrical Installations
from:

D. V. HOLLAMBY LTD.

138 High St., Wootton Bassett, Wilts.

Telephone 295

ALL LEADING MAKES IN STOCK

Howard Autos, Swindon's Main Cotton Motor Cycle distributors always have a good selection of guaranteed used cars for you to choose from.

HOWARD AUTOS

3 WELLINGTON ST., SWINDON

Tel. 6603

STAND TICKETS

Tickets for seats in the Old and New Stands may be booked in advance. Postal applications should be accompanied by a remittance and stamped addressed envelope. Tickets ordered by telephone must be collected not later than 12 noon on the day of the match, otherwise they will not be reserved.

Prices for League Matches:—

New Stand—Block C—6/- (Centre)

Blocks B and D—5/- (Side Stands)

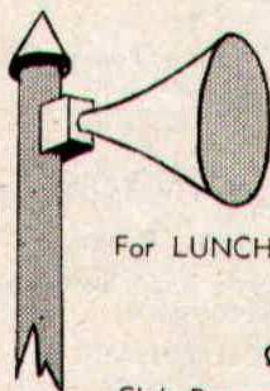
Blocks A and E—3/6 (Wing Stands)

Old Stand—Centre Box—7/6

Block H—5/- (Centre)

Blocks F, G and I—3/6 (Side Stands)

Postal applications to—Secretary, Swindon Town F.C., County Ground, Swindon, Wilts. Telephone Swindon 2118.



**A SPECIAL
MESSAGE**

For LUNCH before the match—or a SNACK afterwards, visit

THE BULLDOG

QUEEN'S DRIVE, WALCOT ESTATE — Tel. 6877

Club Room available for meetings, private parties, wedding receptions, etc.

A SIMONDS TAVERN

Supporters' Club

Notes

The collection on Easter Monday, in connection with Sam Burton's Benefit Fund, realised £49 10s. 9d.

If our mathematics serve us correctly, this is equivalent to 11,889 pennies, which, with the gate announced as 11,568, represents an average of just over one penny per spectator. This probably sounds rather low, but is, in fact, very good in comparison with collections taken on many grounds.

In practice, of course, it is impossible for many on the terraces to contribute at all, and the average is maintained by the comparatively easy method of using the collecting boxes in the stands.

Many thanks to all who contributed, and, in fact, thanks for all the sustained response to our normal collections throughout the season, the bulk of which are being devoted to the Floodlight Fund.

Many of the Queen's Park Rangers' supporters contributed to the Easter Monday collection on a generous scale.

Some of them told us that, in their opinion, the best team they had seen, this season, was Grimsby Town, so, with points a vital necessity, we were rather apprehensive as to the result of last Saturday's match.

Our fears were unjustified, however, and the score of 3-0, in favour of Swindon, in no way represented the full measure of the difference between the two teams.

Surely, if points were given for corner kicks obtained and goals nearly scored Swindon would now be heading for promotion.

The Committee will be running the usual draw in connection with the Derby, and tickets for this may be obtained now, through the normal channels of the weekly competition.

The prizes are substantial, and we hope that the effort will be well supported. The profits will be devoted to the Floodlight Fund.

Holders of lucky programmes last Saturday were: 577, Mr. Hunt, 7 Victory Row, Wootton Bassett. 2800, Mr. Cripps, 50 Rosebery Street, Swindon.

SATURDAY SUMMARY

8th April, 1961

First Team v. Grimsby (Home)—

Burton; Jones, K., Trollope; Morgan, Owen, Bell;
Corbett, Hunt, Summerbee, Woodruff, Jones, F.
Result: Won 3—0. Scorers: Woodruff, Hunt, 1 o.g.

Reserve Team v. Luton (Away)—

Ayres; Wollen, Richardson; Prosser, Chamberlain,
Thompson; Smart, Woolford, Marshall, Jackson,
Shergold.
Result: Lost 3—1. Scorer: Woolford.

"A" Team v. Purton (Away)—

Gray; Norris, Westlake; Chedgy, Marks, Cox; Gardiner,
Davis, A., Davies, K., Morris, Reynolds.
Result: Won 3—1. Scorers: Davies, K. (2), Morris.

"A" Team v. Purton (Home)—

Hudd; Hellin, Lloyd; Davies, D., Harvey, Powell;
Whiffen, Colsell, Hobbs, Watson, Rogers.
Result: Lost 4—0.

The Rendezvous of all Sportsmen . . .

THE CROWN INN

(Host: Frank Plyer)

Arkell's Best Ales : Fully Licensed
Snacks, etc.

STRATTON ST. MARGARET Tel. 2339

"SUPPORT YOUR HOME"

CIVIL DEFENCE

plays a vital part in saving lives

Particulars:

CIVIC OFFICES, SWINDON

WIN OR LOSE!

THE FOOD IN THE

China Restaurant

IS BEST

107 COMMERCIAL ROAD

SWINDON 6888

Open Daily 12.0 a.m. - 11.30 p.m.
For all Chinese and English Dishes

MONDAY NEXT, APRIL 17th, 1961

Wessex Youth League v. West Ham Youth Team

at the County Ground. Kick-off 7.30 p.m.

Selected Wessex Youth Team:

M. Hudd (Swindon Town)
T. Wollen (Swindon Town)
T. Gulliver (Weymouth)
M. Reeves (Plymouth A.)
P. Higgins (Oxford U.)
A. Jacques (Oxford U.)
J. Derrick (Bristol C.)
A. Williams (Bristol C.)
P. Sanders (Newport C.)
J. Allen (Bristol R.)
R. Peters (Bristol C.)

COATE GARAGE



THE ALCOHOL FUEL

REPAIRS
SERVICING
TYRES

★

OVERHAULS
REBORING
WELDING

Props.: E. V. & W. H. Mattick
MARLBOROUGH ROAD, SWINDON

For something a little different, try

DON JONES

HIGH CLASS CONFECTIONER
AND TOBACCONIST

Always a good selection of
SUCHARDS' - TOBLER
TERRY'S
Quality Chocolates and Presentation
Boxes

112 COMMERCIAL ROAD

6012 SWINDON 6012

Typewriters
from £10

FULLY GUARANTEED

**DOBELL SHEARMAN
& CO. LTD.**

26 HIGH ST. & 33 FARINGDON RD.,
SWINDON Telephone 2312

Only 800 yards to your Dream Car —
NEW ALPHA MOTOR Co.
(SWINDON) LTD.

QUEENS DRIVE, SWINDON

Tel. 5062/63

For Top Quality Used Cars at the
Lowest Prices

Open 7 days per week from 7 a.m. to 10.30 p.m.

DIVISION III

	P.	W.	D.	L.	F.	A.	Pts.
Bury	42	27	7	8	102	45	61
Walsall	42	25	5	12	89	56	55
Queen's Park Rangers	41	22	9	10	78	53	53
Port Vale	42	17	12	13	93	74	46
Grimsby Town	41	18	10	13	69	61	46
Torquay Utd.	41	14	17	10	70	64	45
Watford	41	17	11	13	71	66	45
Notts. C.	42	18	9	15	74	73	45
Barnsley	38	18	6	14	71	68	42
Newport Cty.	41	16	10	15	76	80	42
Halifax Town	40	13	16	11	64	68	42
Hull City	40	16	9	15	68	65	41
Shrewsbury	39	13	14	12	69	64	40
Coventry City	40	14	11	15	71	67	39
Bristol City	42	15	9	18	63	65	39
Brentford	41	12	15	14	52	60	39
Bournemouth	42	14	9	19	54	69	37
Southend U.	42	12	11	19	54	70	35
Tranmere R.	42	14	7	21	75	107	35
SWINDON TOWN	40	11	12	17	55	52	34
Reading	40	11	11	18	57	76	33
Bradford C.	41	10	12	19	58	79	32
Chesterfield	42	10	10	22	60	77	30
Colchester U.	42	9	10	23	58	92	28

Chappell's Funeral Service

(Fun. Dir. : A. A. Winchcombe)

196 COUNTY ROAD
SWINDON

24-hour Service

Tel. 6073

*Don't buy a Car, Motor Cycle or Scooter
until you have seen the wide selection we
have to offer at*

**CORONATION
CAR SALES**

67/68 VICTORIA ROAD

Telephone: 6106

**SEA VIEW HOLIDAY
CAMP**

YOUR HOST—Mr. BENNETT



**WYKE REGIS - WEYMOUTH
Dorset**

"COAL!"
"COAL!"
"COAL!"

J. WILMER

ST. MARGARET'S ROAD, SWINDON

Telephone 22535

MEET YOUR FRIENDS AT THE

Southbrook Inn

(Hosts: Mr. and Mrs. Jack Scutts)

FULLY LICENSED
CLINCH BEERS, ETC.

**SOUTHBROOK STREET, SWINDON
Tel.: 5837**

STOP ! LOOK !

NU-HOMES

For all Household Fitments

Paints - Emulsions - Wallpapers
Kitchen Units and Bathroom Suites,
etc.

**176a Manchester Road
TELEPHONE 2178**

FORTHCOMING MATCH . . .

FOOTBALL COMBINATION

SWINDON TN. v. READING

SATURDAY NEXT, APRIL 15th, 1961

Kick-off 3 p.m.

**TO ALL LOCAL SPORTS
CLUBS**



It is quicker and cheaper
to WASH and DRY your
Football Clothes at

The Launderettes

at

59 WELLINGTON STREET

or

**186 VICTORIA ROAD
SWINDON**

*For High Class
Central Heating, Plumbing
Painting and Decorating
Electrical Installations
and Repairs*



NORTH WILTS

Sanitary & Heating
Co. Ltd.

NEWPORT ST., SWINDON

'Phone: 4201

Always at your service

L. BIBBY

For all Types, Rags, Iron and Metal,
etc. Spot Cash Paid. Please Telephone
2101 and our van will call.

THE PADDOCK, ERMIN STREET
STRATTON ST. MARGARET

Walcot Greengrocer

G. E. STAMMERS

✽

**1 SUSSEX SQUARE
SWINDON**

SWINDON **2526**

CAN ALSO BE YOUR LUCKY NUMBER ! ! !

if you ring

HOLMES & LUCAS

14A REGENT STREET :: SWINDON

for all your

TELEVISION, RADIO AND ELECTRICAL REQUIREMENTS

LUCKY PROGRAMME

Please retain your programme. An announcement will be made at half-time of two numbers and the holders will be given a stand seat at the next Division III game. The persons who purchased the programmes bearing the winning numbers should call at the office after the game and claim their seats.

2137

FRIED FISH AND CHIPS

Always Fresh - Always Hot

WALCOT FISHERIES

Sussex Square

Wet fish and frozen foods all refrigerated display.

Telephone Swindon 2731

6 REGENT CIRCUS (NEAR G.P.O.)

OR FOR YOUR FOOTBALL OUTFITS
BOOK YOUR COACH FOR PRIVATE PARTIES
Main Booking Agents for Millers Coaches
Agents for Wessex School of Motoring
Newsagents : Tobacconists : Confectioners
A. J. D. WOODHOUSE & A. SMITH

HATTON'S NEWSAGENCY

For Insurance or Hire Purchase
CARS - CARAVANS - MOTOR CYCLES, etc.
Consult

D. & H. HENTY LTD.

54 COMMERCIAL RD., SWINDON
SWINDON 5258

PANKHURST

**The Palace, Gorse Hill,
Swindon.**

MOTOR CYCLE - SCOOTER AND
THREE-WHEELER SPECIALISTS

Open Mon. to Sat. 9 a.m. - 8 p.m. Phone 5466

To be well shod—
is to be well dressed

Victoria Shoe Repairs

129 VICTORIA ROAD, SWINDON

First class materials and workmanship

Maylott Studios

For GROUP & SPORT Photographs
OFFICIAL PHOTOGRAPHER TO
SWINDON TOWN FOOTBALL CLUB

31 FARINGDON RD. Tel. 2792